

IP Office License Migration to R10 and Higher

This is what needs to be done:

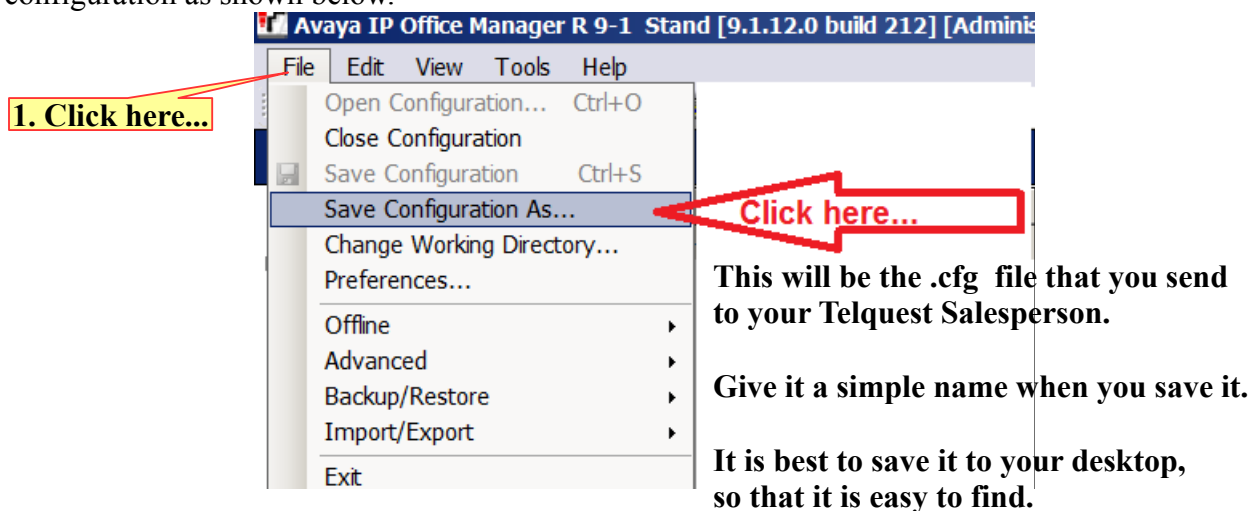
You must export your existing licenses from the IP Office as a .xml file.

You must use IP Office Manager R10.0 or higher on your PC.

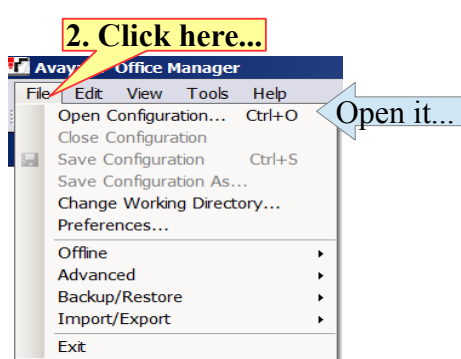
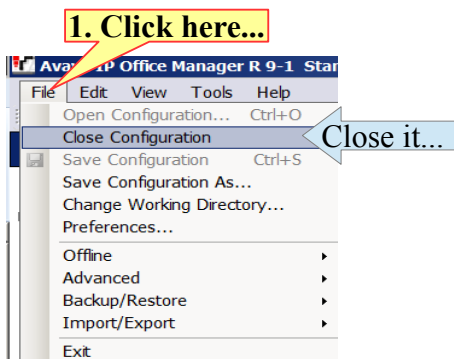
You cannot use lower Releases/Versions of the IP Office Manager.

Using IP Office Manager R10.0 or higher, log into the IP Office system as you normally do.

Once the connection is complete, click on **File > Save Configuration As** to save a copy of the existing configuration as shown below.

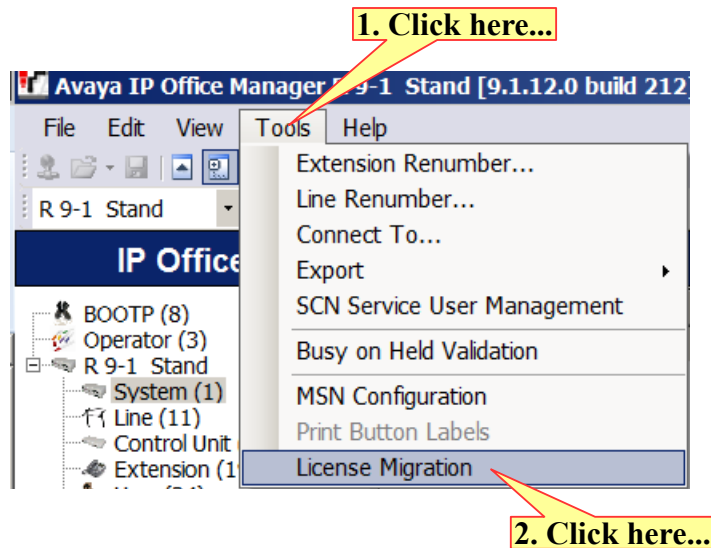


Next: Close the configuration and then **Open** it again.

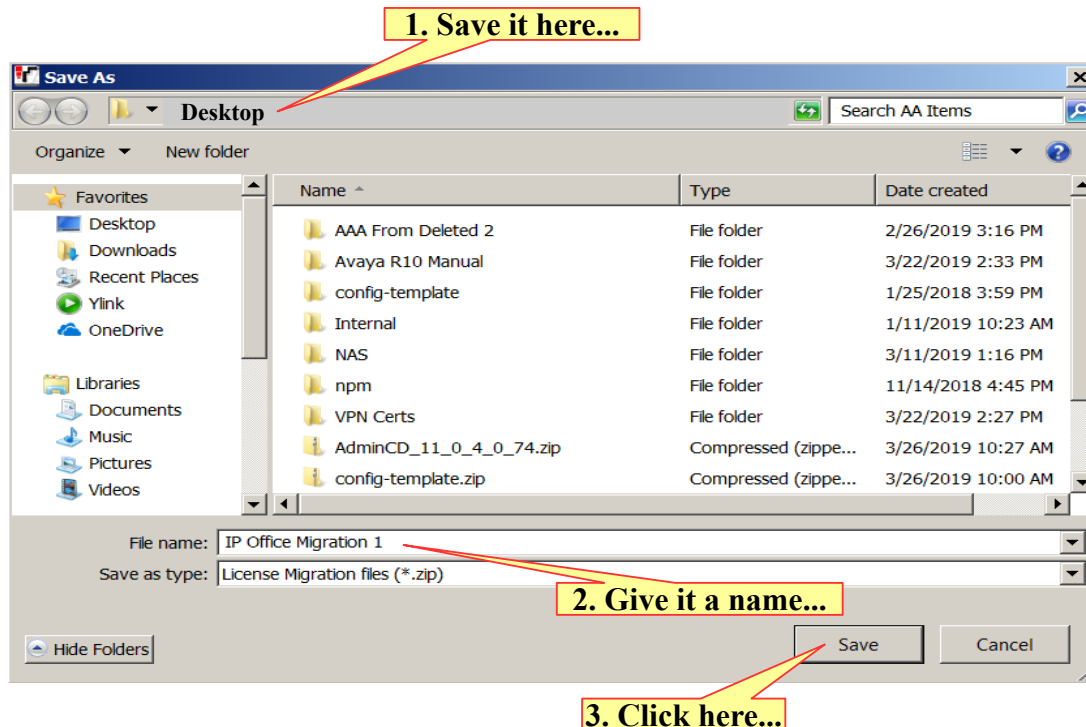


Next:

On the main toolbar, click on **Tools > License Migration** and save the file onto your desktop. This will be a zipped file.

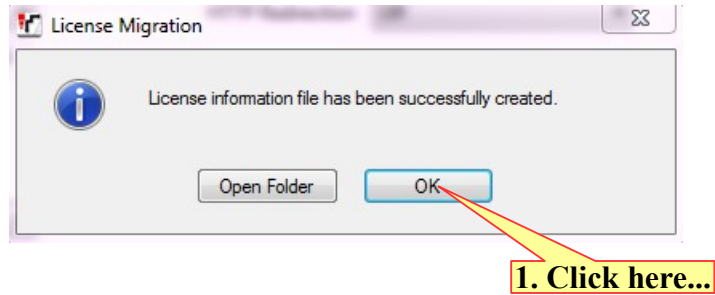


The screen below will pop up:



Page 3

Upon successfully migrating to a .xml format you will receive the following



Now you can email the saved .cfg file (named on Page 1) and the saved .xml file (named on Page 2) to your Telquest salesperson.

Both files should be on your computers desktop.